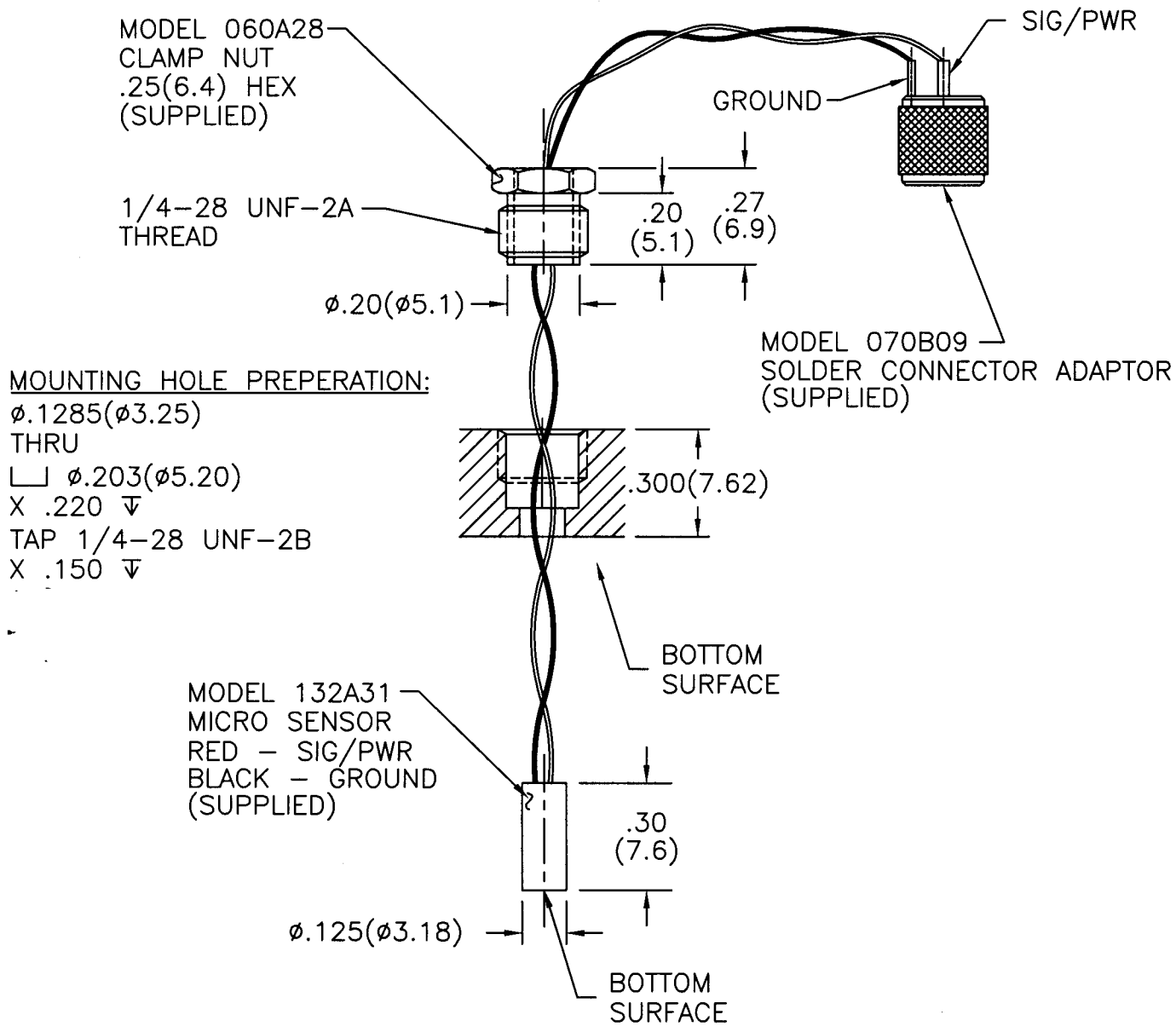


6574

PCB Piezotronics Inc. claims proprietary rights in the information disclosed hereon. Neither it nor any reproduction thereof will be disclosed to others without written consent of PCB Piezotronics Inc.

APPLICATION		
NEXT ASS'Y	USED ON	VAR

REVISIONS				
REV	DESCRIPTION	ECN	DATE	APP'D
C	REVISED PER ECR	17229	4/3/03	DM 4/03



1. LIGHTLY COAT THE INSIDE DIAMETER OF MOUNTING HOLE, OUTSIDE DIAMETER OF MICRO SENSOR (MODEL 132A31), AND CLAMP NUT (MODEL 060A28) WITH RTV.
2. HAND TIGHTEN CLAMP NUT INTO MOUNTING HOLE.
3. INSERT MICRO SENSOR INTO BOTTOM OF MOUNTING HOLE.
4. WHILE APPLYING FINGER PRESSURE TO THE BOTTOM OF THE MICRO SENSOR, UNTIGHTEN CLAMP NUT UNTIL THE MICRO SENSOR AND MOUNTING HOLE BOTTOM SURFACES ARE FLUSH WITH EACH OTHER.
5. REMOVE EXCESSIVE RTV FROM MICRO SENSOR AND MOUNTING HOLE SURFACES.
6. ALLOW RTV TO FULLY CURE.

UNLESS SPECIFIED TOLERANCES		DRAWN	ECB 4/4/03	MFG	JBS 4/4/03	 3425 WALDEN AVE. DEPEW, NY 14043 (716) 684-0001 EMAIL: SALES@PCB.COM
DIMENSIONS IN INCHES	DIMENSIONS IN MILLIMETERS [IN BRACKETS]	CHK'D	DM 4/4/03	ENGR	Y.T. 4/4/03	
DECIMALS XX \pm .01 XXX \pm .005	DECIMALS X \pm 0.3 XX \pm 0.13	APP'D	WSH 4/4/03	SALES	Jmm 4/4/03	
ANGLES \pm 2 DEGREES	ANGLES \pm 2 DEGREES	TITLE	INSTALLATION DRAWING MODEL 132A31 MICRO SENSOR			
FILLET AND RADII .003 - .005	FILLET AND RADII [0.07 - 0.13]	DD011 REV. C 01/21/03		CODE IDENT. NO. 52681	DWG. NO. 6574	SCALE: 2X
						SHEET 1 OF 1